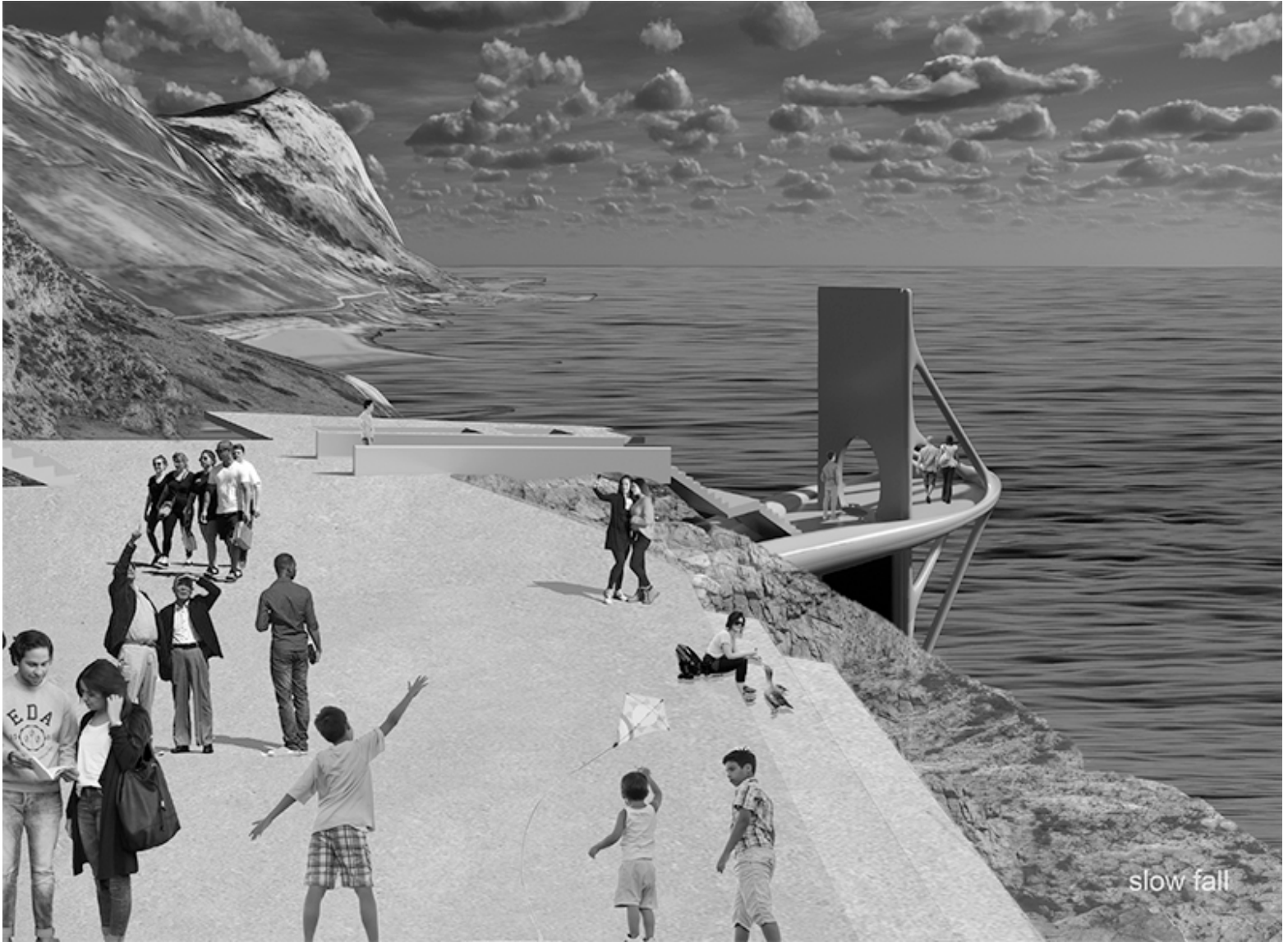


Opposite:

WEAVERS OF THE DUST

Peering into deep time, unearthed geological layers are metaphorically exploded and set up vertically. Humans move between the layers of time, contemplating their orientation in history. A projected future is suspended until it becomes history.



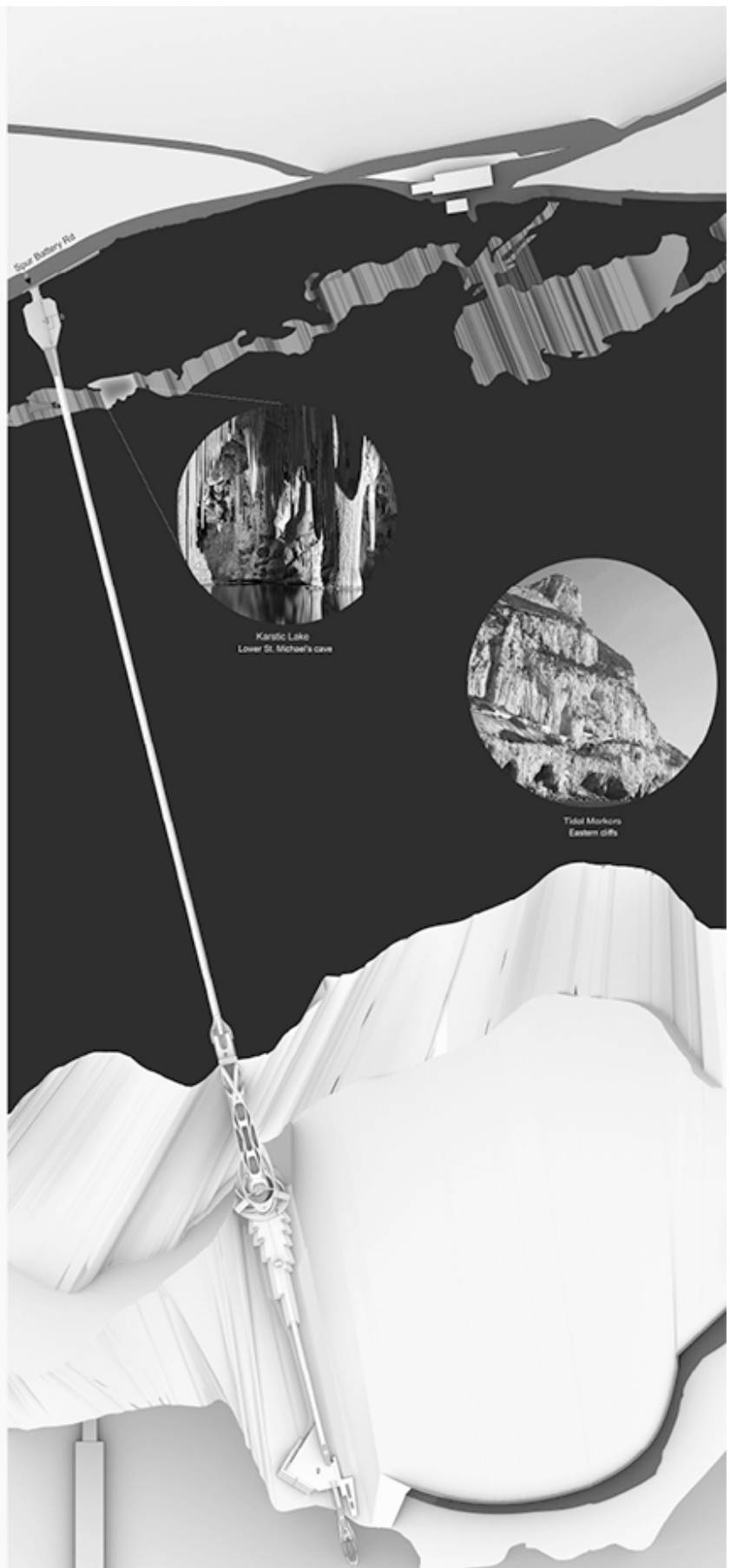


slow fall

S
K
Y
C
R
O
S
S
I
N
G

T
I
D
A
L
T
O
W
E
R

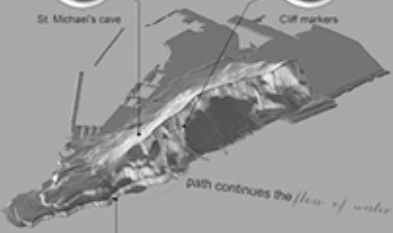
S
L
O
W



GRAVITY
and
THE ROCK

KARSTIC
SYSTEM

LUNAR
TIDES



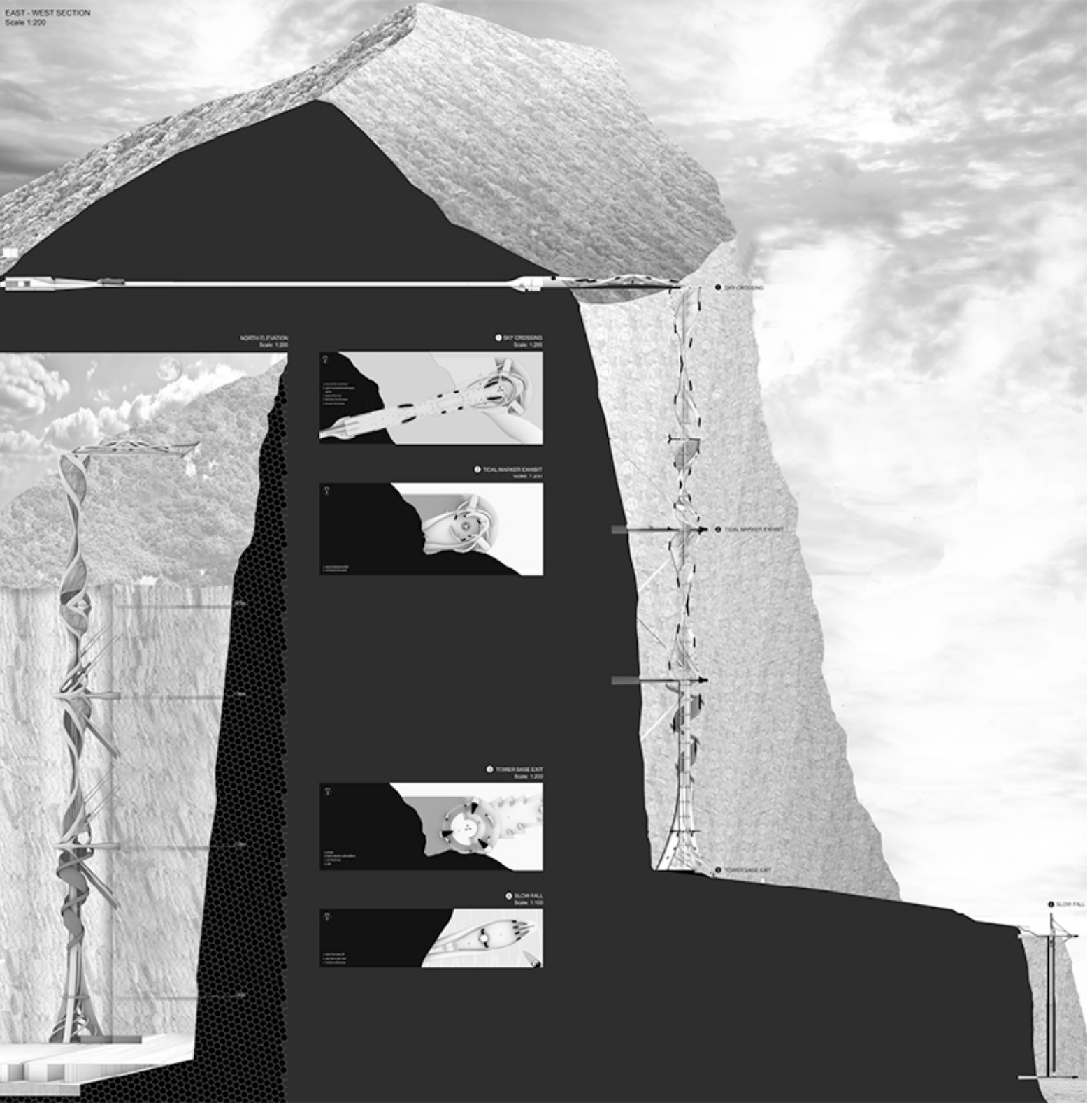
St. Michael's cave

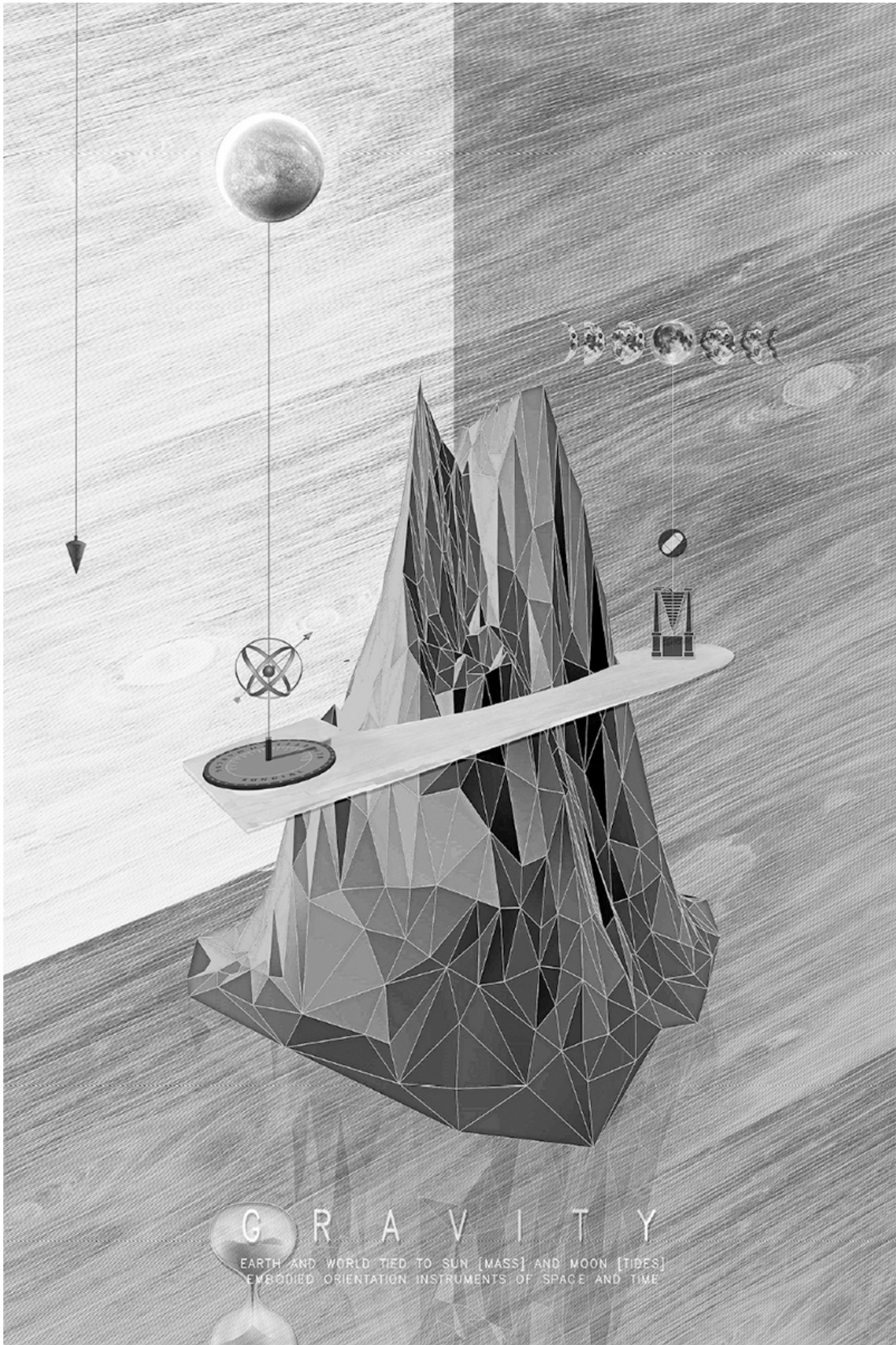
Cliff markers

Sea cave complex (side)

Key
a. entrance under water catchment
b. hotels

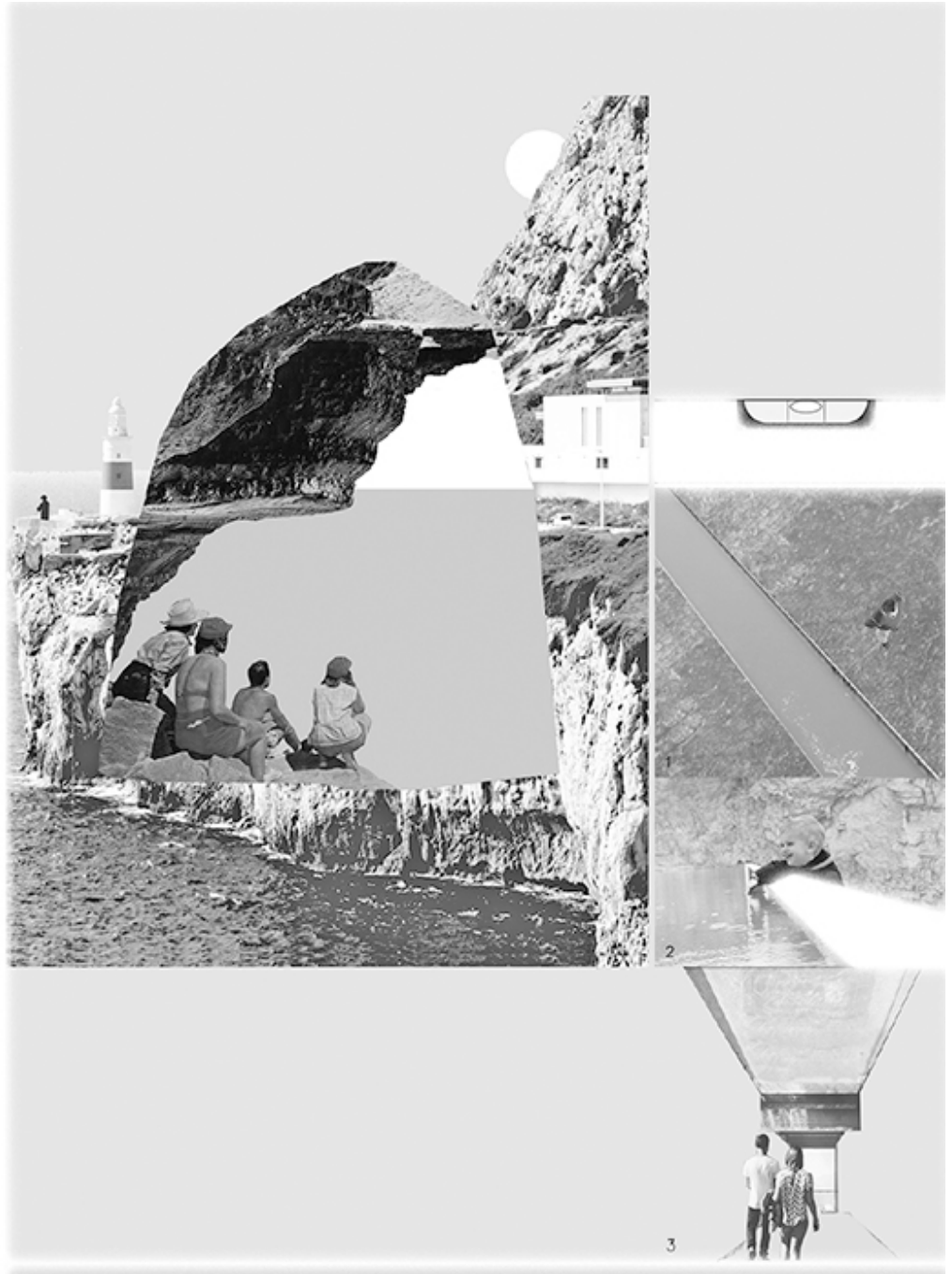
EAST - WEST SECTION
Scale 1:200





G R A V I T Y

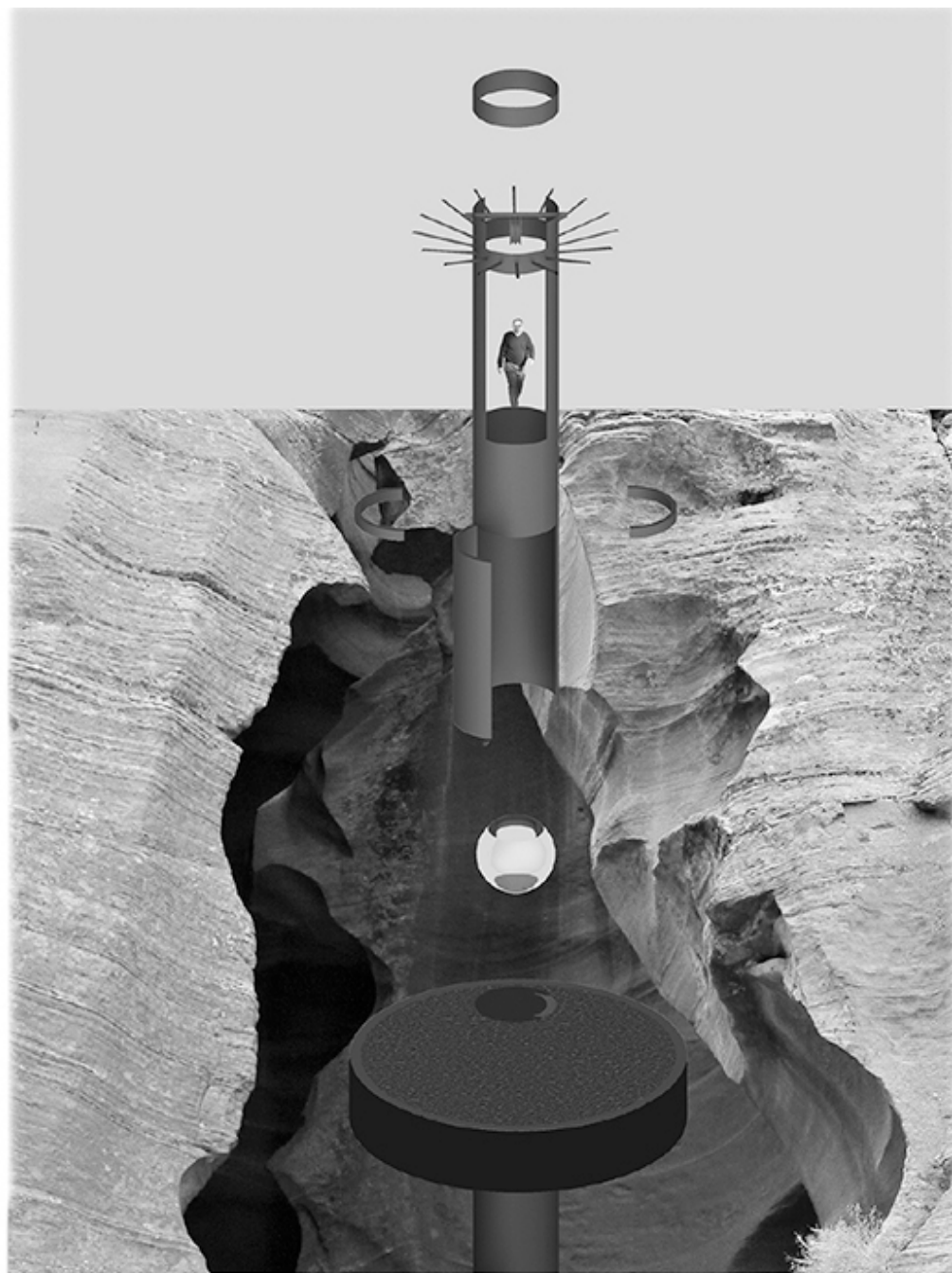
EARTH AND WORLD TIED TO SUN [MASS] AND MOON [TIDES]
EMBODIED ORIENTATION INSTRUMENTS OF SPACE AND TIME



Opposite:

HORIZONS

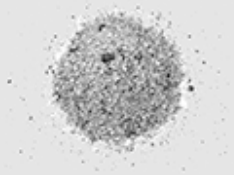
The horizontal reference originates in the imaginary line that joins earth to sky. Taken further, this boundary is also a structure that holds together the individual elements of a specific situation by the continuity of reference to the world of experience.



Opposite:

SLOW FALL

Based on Lenz' Law, slow fall acts as a natural gravity regulator by breaking the time of descent in the downward journey through a space. Degrees of gravity are achieved by either altering the thickness of the cylinder or the magnetic mass within the sphere.



MATERIAL TRANSFORMATION

INCREASING TRANSPARENCY OF PLATE GLASS



GLASS [SAND AS ROCK BROKEN BY WATER]

Opposite:

MATERIALIZING PROCESS

Gravitational erosion from flows of water result in the dissolution of rock to gravels and light sands. Glass [sand as rock broken by water] is poetically explored in levels of transparency, analogous to the way the process is experienced in a landscape.



Opposite:

LIGHT CONES

Growing out of two gravity diagrams by Stephen Hawking, one future [widening at the top] and the other past [widening at the bottom], the architecture is an invitation to inhabit past, present and future instantaneously.

Opposite:

SLOW AND FAST TIME

Waves crashing against a cliff formed in strata from distant epochs. Breaking and crashing ad infinitum, a cycle occurs in *fast time*, layers upon layers of lithified deposits, fossilized as evidence of distant epochs, formed in *slow time*.

